

A VISUAL GUIDE FOR THE NEW THEATRE DISTRICT PARKING STRUCTURE AT LA JOLLA PLAYHOUSE

Location: Theatre District Parking Structure, 9135 S Scholars Dr, La Jolla, CA 92093

The new underground Theatre District Parking Structure – part of UC San Diego’s Theatre District Living and Learning Neighborhood (TDLLN) – is located directly across from our theatres at 9135 S Scholars Dr, La Jolla, CA 92093 and is open to Playhouse patrons. Parking in the Theatre District Parking Structure requires a valid UCSD parking pass be displayed 7 days a week, 24 hours a day, no exceptions.

Enter the Theatre District Parking Structure at **9135 S Scholars Drive, La Jolla, CA 92093.**

([Google Map to this entrance.](#))



Parking in the Theatre District Parking Structure requires a valid UCSD parking pass be displayed 7 days a week, 24 hours a day, no exceptions.

Ticket buyers can pay for parking on-site with pay stations located on each floor of the structure or digitally, using the website parkmobile.io or the [ParkMobile app](#).



Parking for Playhouse Subscribers

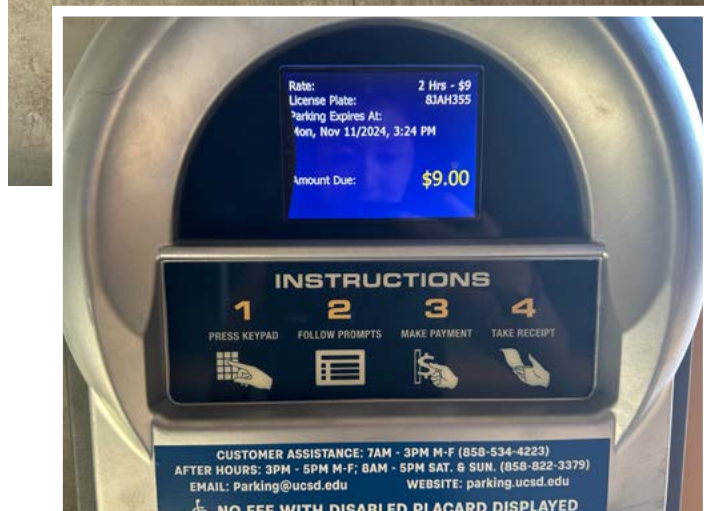
Updated April 2025, effective for your first show of the 2025/26 Season

The cost of parking in the Theatre District Parking Structure is covered by La Jolla Playhouse as one of the benefits of your subscription. UC San Diego Parking and Commuter Services has introduced a new system to activate your free parking when attending the shows in your subscription package. [Click here for Subscriber Parking info.](#)



Upon entering the parking structure, turn right and follow signs to park. You can park in any non-reserved space, but for quickest access to the elevator and stairs facing the Playhouse, turn right as you drive into the structure. We recommend parking in the "South" sections 1G, 2G, 3G, 4G, noted on the pillars.

Please remember to note your license plate number, which will be needed for parking payment.



The elevator and stairs to ground level will be closest to areas 1G, 2G, 3G and 4G of the parking structure. Follow signage noting "La Jolla Playhouse Elevators."

At 2G, 3G and 4G, there will be a door located near a pay station and a large sign that reads "UC San Diego Elevator Access."

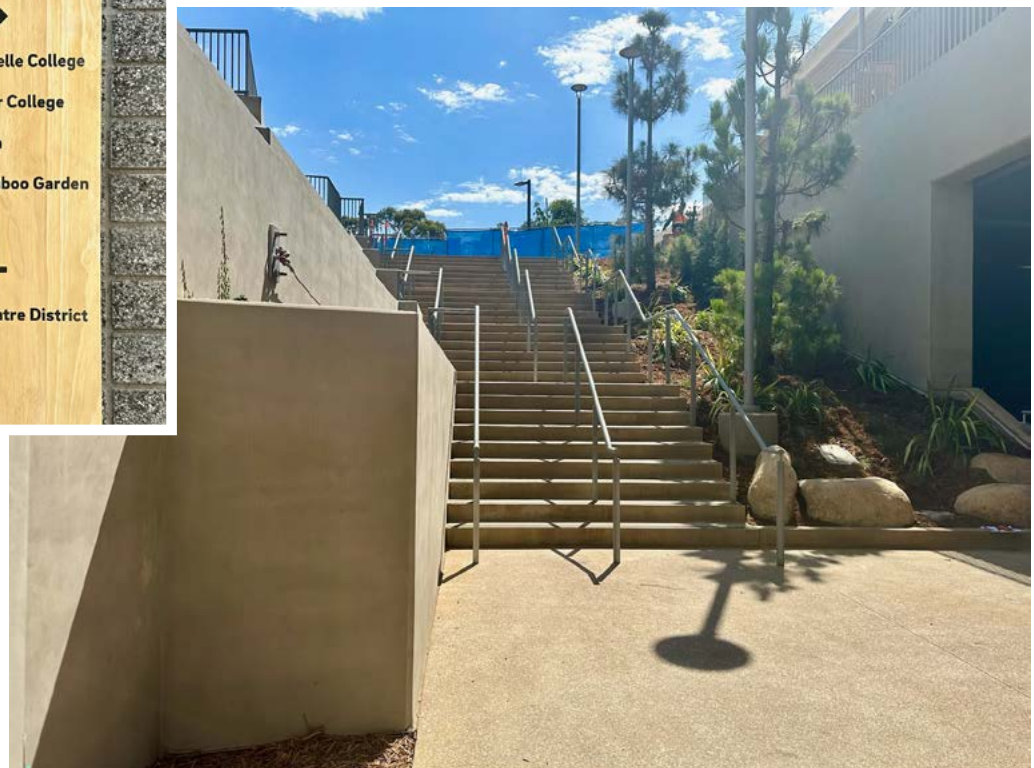
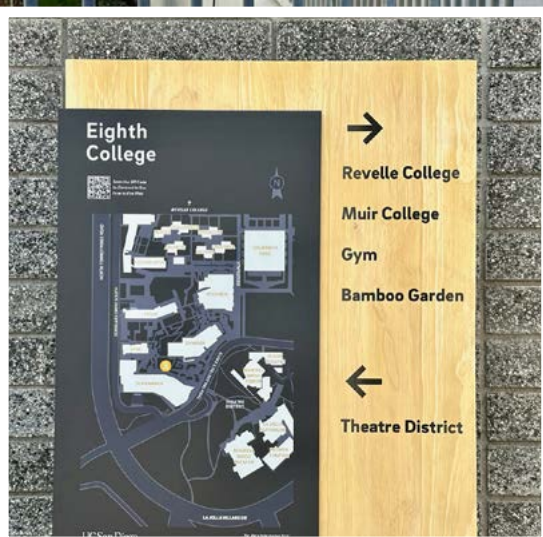
If you are a single ticket buyer who would like to pay for parking at the pay station versus on the ParkMobile app or website, you can do so now before entering the door to access the elevator lobby:

- Parking after 5pm weekdays and on weekends is \$2.25/hr (maximum \$9) in any non-reserved spot.



Elevator lobby on 2G, 3G and 4G

Press *1 for ground level. Once you exit the elevator, veer slightly to your right and follow the signage to the Playhouse, located directly across the street.



View of staircase from P1 (Parking Level 1) to ground/street level

THEATRE DISTRICT PARKING STRUCTURE AT LA JOLLA PLAYHOUSE | VISUAL GUIDE

The walking distance from parking to the Playhouse is 0.1-0.2 miles on level ground (except for the flight of stairs from P1 to ground level, should you choose not to take the elevator). The walk takes 1-2 minutes.



For Disabled parking: Designated disabled parking can be found on level one (section 1A), on the right as you drive into the structure. Then proceed to elevator P1 and take it to level 1 for level access to the Playhouse. No parking fee required with disabled placard displayed.

