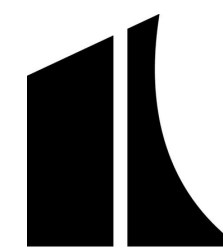


LA JOLLA PLAYHOUSE ARTS ACADEMY 2020

LA
JOLLA
PLAY
HOUSE

san diego county office of
EDUCATION
FUTURE WITHOUT BOUNDARIES™



The
Kennedy
Center

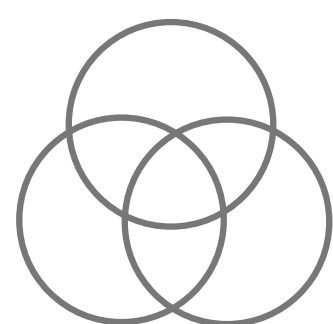
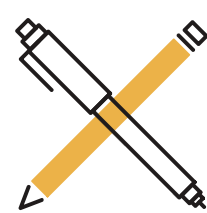


WHAT IS ARTS INTEGRATION?

Arts Integration is an approach to teaching in which students construct and demonstrate understanding through an art form. Students engage in a creative process which connects and art from and another subject area and meets both.

THE PROGRAM

- Playhouse Teaching Artist working **side-by-side** with classroom teacher to implement **lessons for one hour, twice a week over the course of ten weeks.**



- Working with **every** teacher, in **every** grade level at the school from TK - Grade 6 **including special needs classroom.**

- All curriculum planning and reflection is done **collaboratively** between Playhouse Teaching Artist and classroom teacher.



- Following **graduated release method of professional development.** For the first third of the program, the Playhouse Teaching Artist takes the lead on classroom instruction. During the second third, they co-teach the class. For the final third of the program, the **classroom teacher takes the lead in arts integrated classroom instruction and Playhouse Teaching Artist is there to coach, cheerlead and gently guide instruction, if necessary.**

HISTORY

- A **Kennedy Center's Partners-in-Education Program** since 1999.
- Conducted in partnership with **San Diego County Office of Education VAPA Department.**
- Focused work in **Chula Vista Schools** since 2012. Started **"whole school" model** in 2017 at Montgomery Elementary.
- In 2019-2020 school years, **expanded program to three elementary schools** in Chula Vista Elementary School District: Finney Elementary, Palomar Elementary, and Harborside Elementary

TO LEARN MORE, CONTACT BRIDGET CAVAIOLA
AT BCAVAIOLA@LJP.ORG

THE SCHOOLS

Finney (Myrtle S.) Elementary School

3960 Byrd St. San Diego, CA 92154

- o Principal: Beverly Prange
- o Grades K-6, 386 Students
- o 82% Hispanic, 8% Filipino, 5% White, 5% other or two or more races
- o 34% English Language Learners, 70% Students from low income families

Palomar Elementary School

300 E. Palomar St, Chula Vista, CA 91911

- o Principal: Patricia Magana
- o Grades TK-6, 339 Students
- o 87% Hispanic, 9% White, 5% other or two or more races
- o 37% English Language Learners, 82% Students from low income families

Harborside Elementary School

681 Naples St, Chula Vista, CA 9191

- o Principal: Lisa Forehand
- o Grades TK-6, 668 Students
- o 91% Hispanic, 3% White, 2% Black, 4% other or two more races
- o 65% English Language Learners, 89% students from low income families

HIGHLIGHTS

- **Professional Development** with Kennedy Center Master Teaching Artist, Melanie Rick for teachers and teaching artists.
- **Professional Development** in GLAD Strategies for Teaching Artists & Professional Development in Inclusion Strategies for Teaching Artists
- **Slice of Life/Open House Celebrations** at all sites for invited guests including district administrators, parents, and stakeholders to view Arts Academy in action.
- Collaboration with **Options For All Films** to create impact video:
 - o **Full Story:**
<https://www.youtube.com/watchv=81eAf0uD1vM>
 - o **Short Version:**
<https://www.youtube.com/watchv=B7uSlpUM6aQ>

*All school data gathered from www.greatschools.org